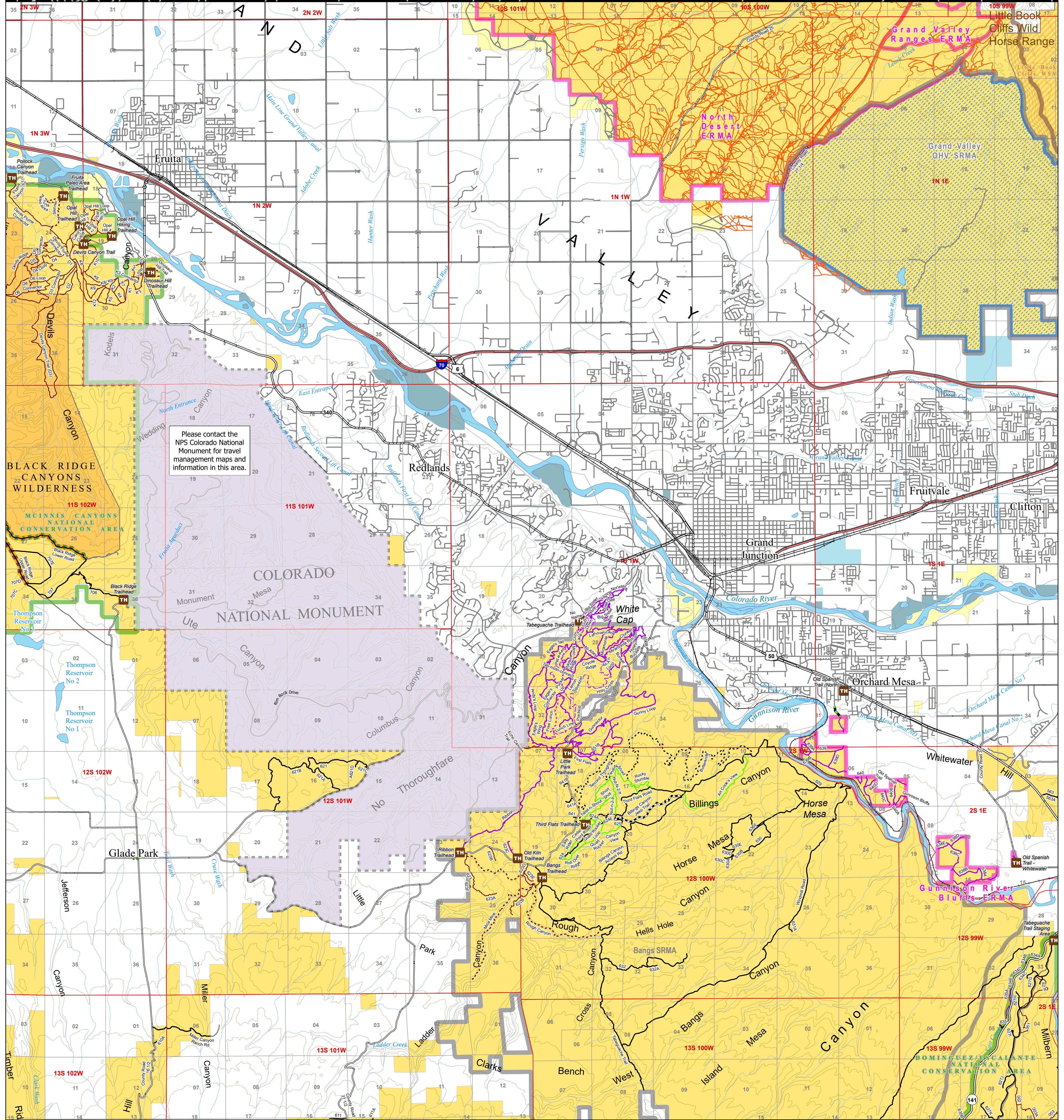




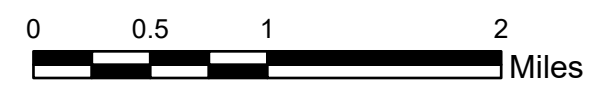
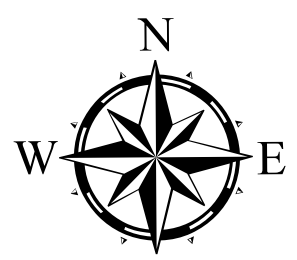
U.S. DEPARTMENT OF THE INTERIOR BUREAU OF LAND MANAGEMENT Grand Junction Field Office

COLORADO

Travel Management Map 10 : Grand Junction



Please contact the NPS Colorado National Monument for travel management maps and information in this area.



No warranty is made by the Bureau of Land Management as to the accuracy, reliability, or completeness of these data for individual use or aggregate use with other data, or for the purposes not intended by the BLM. Spatial information may not meet National Map Accuracy Standards. This information may be updated without notification.

- Towns
- TH Trailhead
- Interstate Highway
- State and US Highways
- Railroad
- County Maintained Roads
- Routes without BLM jurisdiction
- BLM Road and Trail Designations
- Open to Bikes Only
- Open to Bikes and Hiking Only (no horses)
- Open to Equestrian and Hiking Only
- Open to Hiking Only
- Open to all modes of transportation
- Open to Motorcycles, Bikes, Hikers, and Equestrians
- Open to ATV (<50 in), Motorcycles, Bikes, Hikers, and Equestrians
- Open to Bikes, Hikers, and Equestrians
- Open Only to technical rock crawling, trials bikes
- Current use will continue until route is designated
- Undesignated
- Public easement across private land
- Routes with seasonal restrictions
- Open April 15 to August 14
- Open August 15 to February 14
- Open to all Modes of Travel
- County Boundaries
- Private
- Extensive Recreation Management Area (ERMA)
- Special Recreation Management Area (SRMA)
- BLM Grand Junction Field Office
- BLM National Monuments and National Conservation Areas
- Wild Horse and Burro Herd Management Areas
- BLM Wilderness Study Areas
- BLM Wilderness Areas
- Bureau of Land Management
- Bureau of Reclamation
- National Park Service
- State
- State, County, City: Recreation Areas

Note: existing disturbance on the ground not shown on this map is not authorized for travel except foot/horse in most areas unless otherwise noted.

For more detailed recreation maps see the maps for each Special Recreation Management Area (SRMA) and Extensive Recreation Management Areas (ERMA)

Seasonal closure areas:
See individual routes in Black Ridge area : see note on map for closure dates

