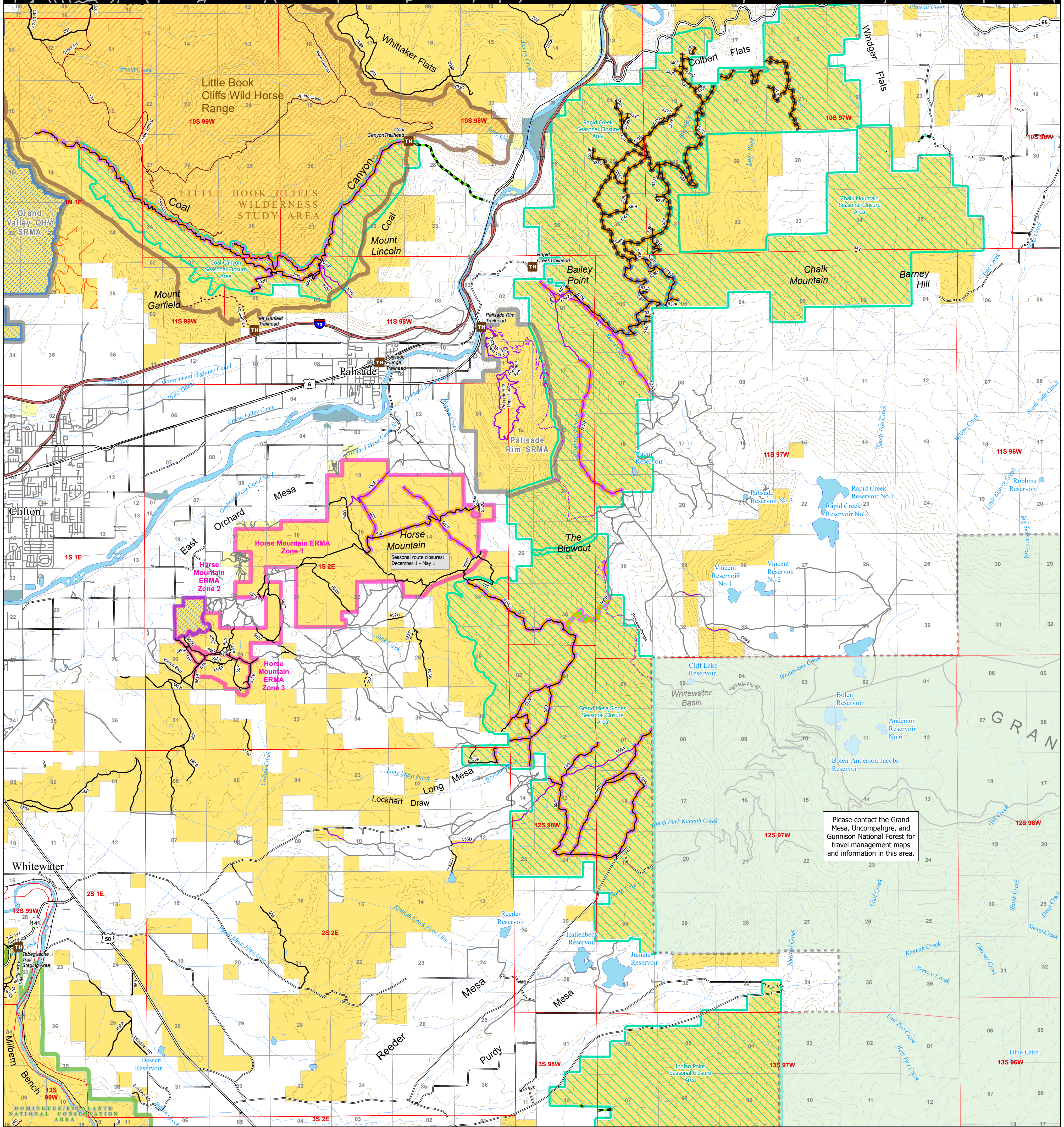




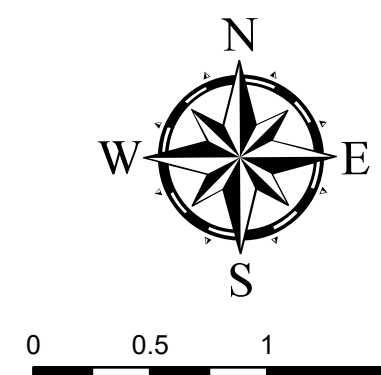
**U.S. DEPARTMENT OF THE INTERIOR
BUREAU OF LAND MANAGEMENT
Grand Junction Field Office**

COLORADO

Travel Management Map 11 : Palisade



Please contact the Grand Mesa, Uncompahgre, and Gunnison National Forest for travel management maps and information in this area.



No warranty is made by the Bureau of Land Management as to the accuracy, reliability, or completeness of these data for individual use or aggregate use with other data, or for the purposes not intended by the BLM. Spatial information may not meet National Map Accuracy Standards. This information may be updated without notification.

- Towns
- TH Trailhead
- Interstate Highway
- State and US Highways
- Railroad
- County Maintained Roads
- Routes without BLM jurisdiction
- BLM Road and Trail Designations
- Open to Bikes and Hiking Only (no horses)
- Open to Equestrian and Hiking Only
- Open to Hiking Only
- Open to all Modes of Travel
- Open to all modes of transportation
- Open to Motorcycles, Bikes, Hikers, and Equestrians
- Open to ATV (<50 in), Motorcycles, Bikes, Hikers, and Equestrians
- Open to Bikes, Hikers, and Equestrians
- Current use will continue until route is designated
- Undesignated
- Public easement across private land
- Chalk Mtn - Public Access - Deeded County ROW
- Routes with seasonal restrictions
- Closed December 1 - May 1
- Open All Big Game Rifle Season. Bike May 1 - Nov 30
- Open during big game rifle season only
- Seasonal Closure Areas
- Open to all Modes of Travel
- County Boundaries
- Extensive Recreation Management Area (ERMA)

- Special Recreation Management Area (SRMA)
- BLM Grand Junction Field Office
- BLM National Monuments and National Conservation Areas
- Wild Horse and Burro Herd Management Areas
- BLM Wilderness Study Areas
- Bureau of Land Management
- Bureau of Reclamation
- Private
- State, County, City: Recreation Areas
- US Forest Service

Note: existing disturbance on the ground not shown on this map is not authorized for travel except foot/horse in most areas unless otherwise noted.

For more detailed recreation maps see the maps for each Special Recreation Management Area (SRMA) and Extensive Recreation Management Areas (ERMA)

Seasonal closure areas:
 Grand Mesa Slopes : December 1 - May 1, Indian Point : December 1 - May 1, Coal Canyon : December 1 - May 31, Chalk Mountain : December 1 - May 1, Rapid Creek : December 1 - May 1, See individual routes in Horse Mountain area : see note on map for closure dates

